



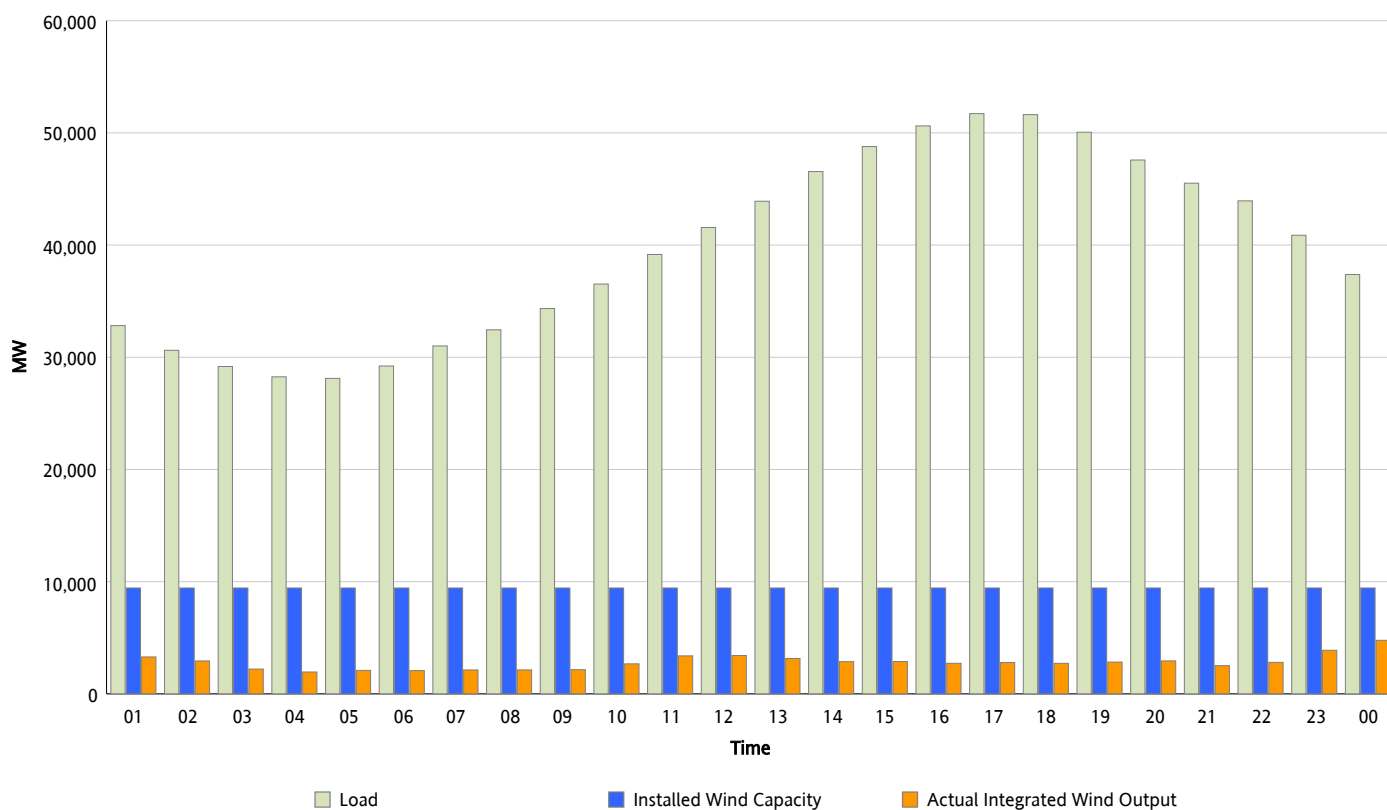
ERCOT Grid Operations

Wind Integration Report : 06/01/2012

Peak Load	51,718 MW
Load Peak Hour (HE)	17
Wind Over Peak	2,794 MW
Wind Record 04/13/12	7,925 MW
Max Wind Value*	4,990 MW
Wind Peak Time	23:10
Wind Integration %	13.01 %

Hourly Average Actual Load vs. Actual Wind Output

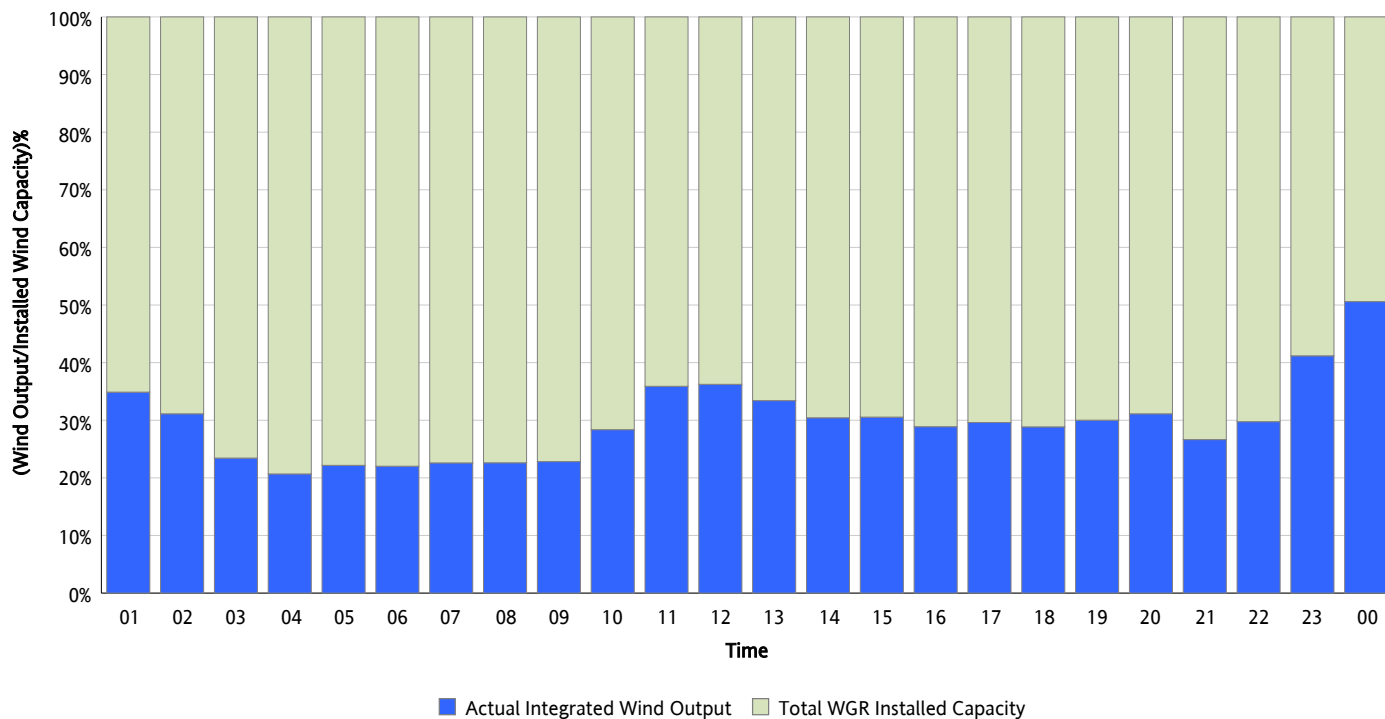
06/01/2012



* Wind Record and Wind Max represent instantaneous values and the rest of the values are integrated over the hour

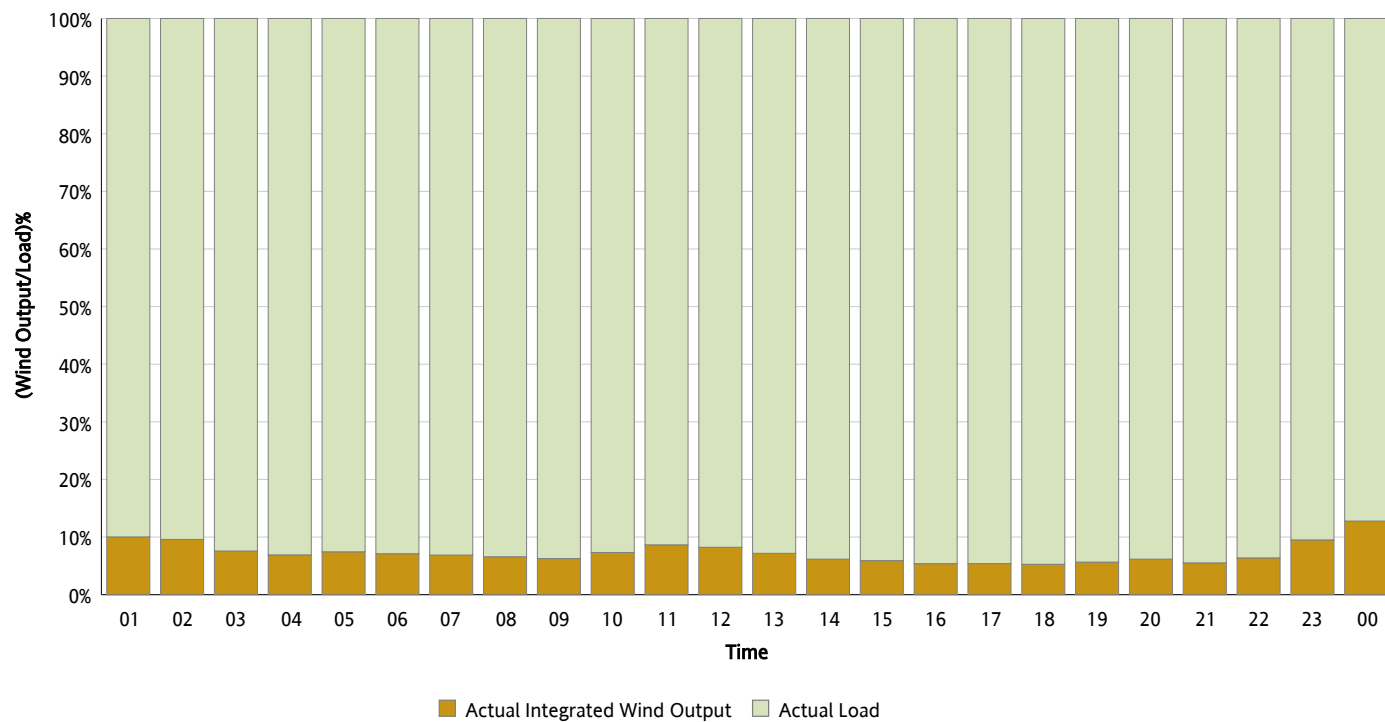
Actual Wind Output as a Percentage of the Total Installed Wind Capacity

06/01/2012



Actual Wind Output as a Percentage of the ERCOT Load

06/01/2012



ERCOT Load vs. Actual Wind Output

05/25/2012 - 06/01/2012

